



# Tow-Trust Towbars

Important: Please read General Notes overleaf before fitting

Issue 1

## TBM2 BMW 5 SERIES. SAL (F10), EST (F11) & GT 2010>

Item	Qty	Description	Item	Qty	Description
A	1	Crossmember	C	2	M16 x 40 Bolts, Nuts & S/P Washers
B	1	Extension bar	D	1	M12 x 100 Bolt & Nyloc Nuts
			E	2	M12 x 40 Bolts & S/P Washers
			F	1	Flip Up Socket Plate
			G	4	12 x 25 Flat Washers
			H	4	Adhesive Foam Strips 100mm Long

### SALOON & ESTATE BUMPER REMOVAL

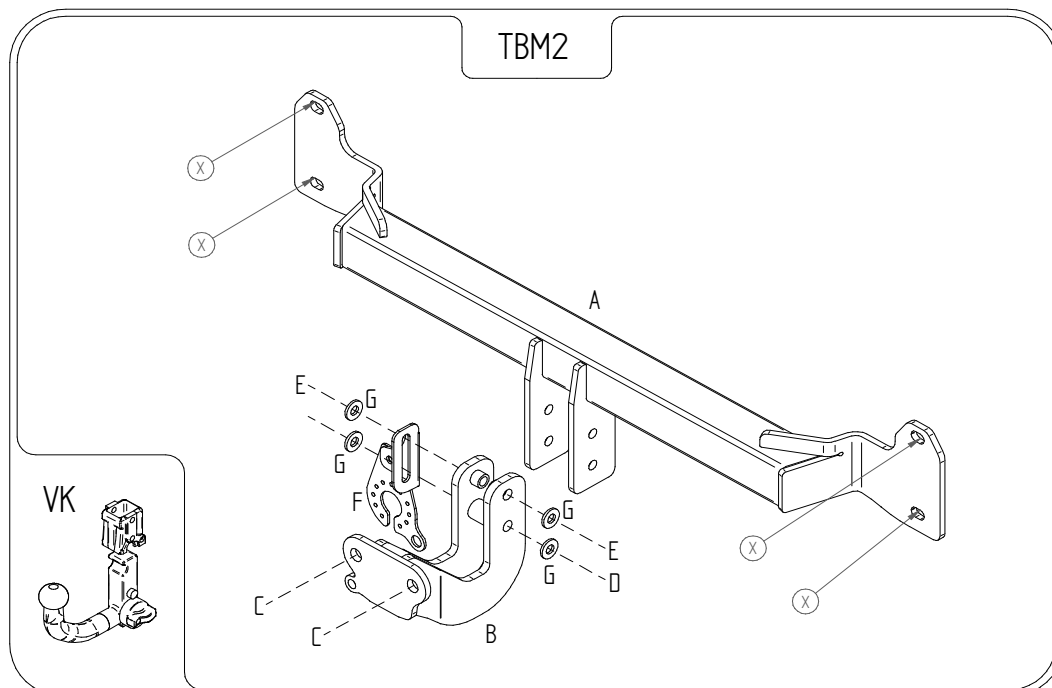
Remove the fixings securing the rear light side trims, remove trims and remove the bumper fixing hidden behind, remove two fixings in each wheel arch and one tip fixing each side, remove nine fixings securing bumper lower edge and under trays, pull bumper tip outboard to release from body disconnect reversing sensors and slide bumper rearwards.

### GT BUMPER REMOVAL

Remove the fixings securing the rear light side trims, remove trims and remove the bumper fixing hidden behind, remove two fixings in each wheel arch and one tip fixing each side, remove two fixing securing bumper lower edge and under tray, unclip the lower edge diffuser to reveal the remaining five fixings and remove, pull bumper tip outboard to release from body disconnect reversing sensors and slide bumper rearwards.

### TOWBAR INSTALATION

1. Remove the fixings securing the rear exhaust silencer hanger to crash beam and support to prevent damage and retain fixing. (If vehicle is fitted with tail pipes both side remove both hangers).
2. Remove the rear crash beam and retain fixings and beam leaving gaskets still in place ready for refitting with Towbar assembly.
3. Place Item **A** onto the Towbar mounting points along with crash beam and refit with original fixings (Item **X** on illustration) ensuring the Towbar is sandwiched between the rear panel and the crash beam and fully tighten, (118Nm).
4. Carefully stick Items **H** horizontally covering the sharp ends of rear crash beam to prevent any bumper damage.
5. Refit exhaust silencer hanger to the rear crash beam with original fixing.
6. Cut the bumper **under tray only** to original BMW markings to Suit Towbar and Flip up electrical plate.
7. Refit rear bumper.
8. Using Item **D** with Item **G** and Item **E** with Item **G** bolt Item **B** and Item **F** to Item **A** and fully tighten.
9. Refit under trays and diffuser, (diffuser on GT ONLY).
10. Using Item **C** bolt the ball bracket (not supplied in this kit) to face plate and fully tighten.



### Note:

1. Recommended Torque Setting for M12 Grade 10.9 -139 Nm. (For other Torque Settings see notes overleaf.)
2. Nose load limits and vehicle manufacturers trailer / caravan weight limits must be observed.