



# Tow-Trust Towbars

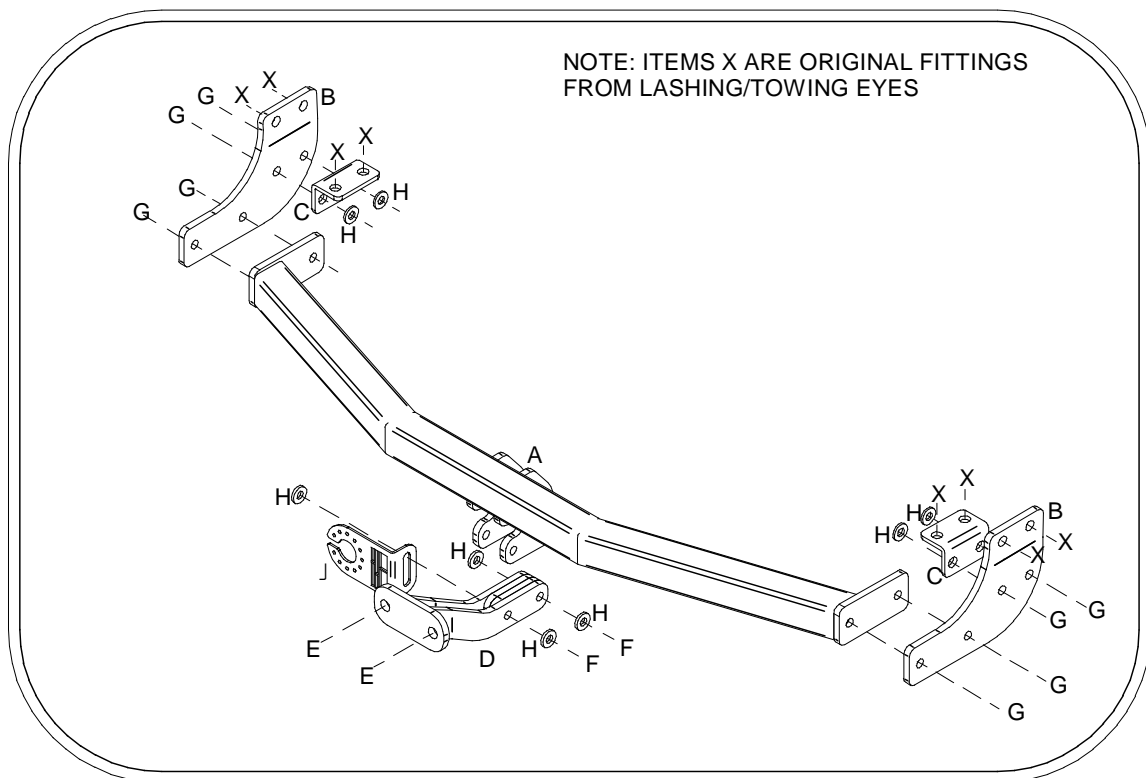
Important: Please read General Notes overleaf before fitting

Issue 2

## TCH8 Chrysler PT Cruiser 2000>

Item	Qty	Description	Item	Qty	Description
A	1	Crossmember	E	2	M16 x 50 Bolts, Nuts & S/P Washers
B	2	Handed Side Arms	F	2	M12 x 85 Grade 10.9 Bolts & Nyloc Nuts
C	2	Angle Brackets	G	8	M12 x 35 Bolts, 6 Nuts & 8 S/P Washers
D	1	Extension Bar	H	8	12 x 25 Flat Washers
			J	1	Socket Plate

1. Lower the spare wheel.
2. Lower exhaust from rearmost hanger (Three Nuts) Note: Support exhaust to prevent it from dropping too far and causing damage.
3. Remove lashing/towing eyes and retain existing bolts.
4. Using original bolts from lashing/towing eyes loosely bolt Item B to existing threaded holes in each chassis member. Note: Original bolts are Grade 10.9 Torque setting is 73Nm.
5. Using original bolts from lashing/towing eyes loosely bolt Item C to existing threaded holes in the lower face of each chassis member. Note: Original bolts are Grade 10.9 Torque setting is 73Nm.
6. Using Item G with Item H loosely bolt Item C to Item B.
7. Using Item G bolt Item A to Item B.
8. Using Item F with Item H bolt Item D and Item J to Item A.
9. Using item E bolt the ball bracket (not supplied in this kit) to the mounting plate.
10. Fully tighten all nuts and bolts and ensure the towbar is rigid and secure.
11. Refit exhaust and spare wheel.



**Note:**

1. Recommended Torque Setting for M12 Grade 10.9 -139 Nm. (For other Torque Settings see notes overleaf.)
2. Nose load limits and vehicle manufacturer's trailer / caravan weight limits must be observed.