



Tow-Trust Towbars

Important: Please read General Notes overleaf before fitting

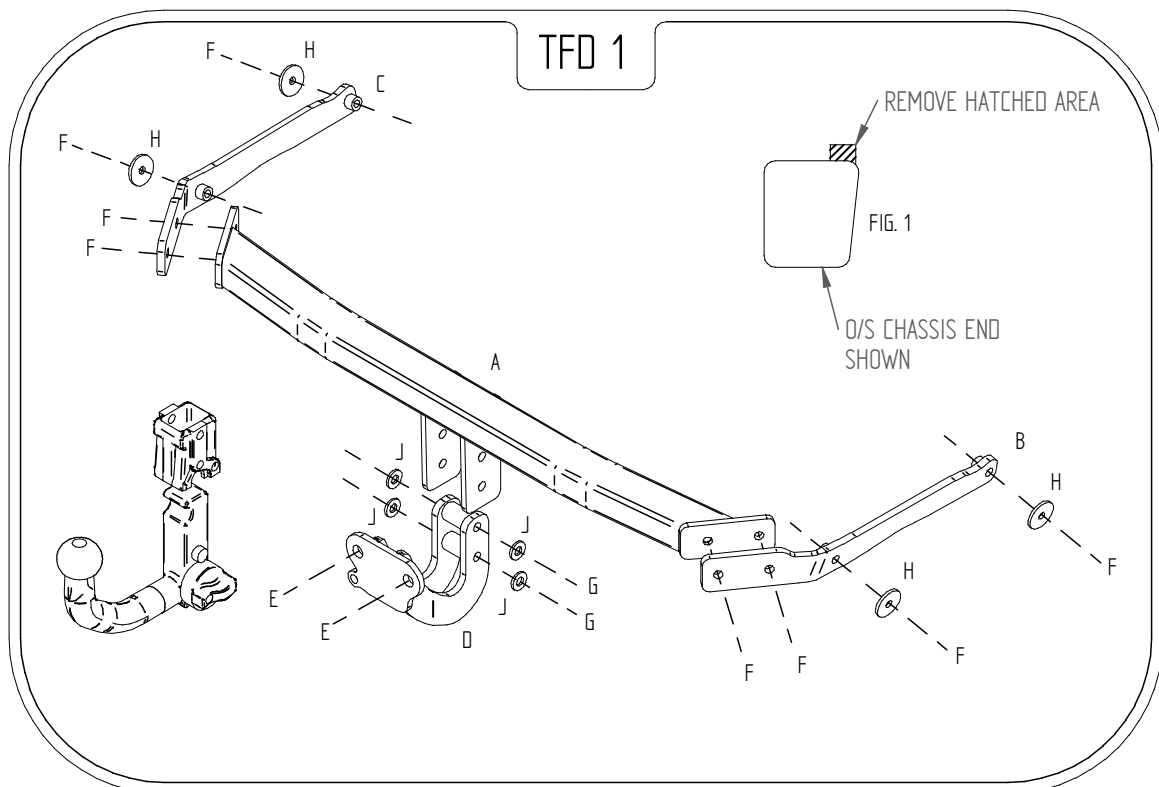
Issue 2

TFD 1 FORD FIESTA 2008>

Item	Qty	Description	Item	Qty	Description
A	1	Crossmember	E	2	M16 x 50 Bolts Nuts & Washers
B	1	Right Hand Side Arm	F	8	M10 x 40 Bolts, 2 Nuts & 8 Washers
C	1	Left Hand Side Arm	G	2	M12 x 100 Grade 10.9 Bolts & Nyloc Nuts
D	1	Extension bar	H	4	10 x 30 Flat Washers
			J	4	12 x 25 Flat Washers

1. Remove the rear bumper.
2. Remove the bumper impact beam (This is not refitted with the Towbar) replace nuts back onto the studs.
3. Locate Item **B** into the right hand chassis and loosely bolt in place using item **F** with item **H**.
4. Locate item **C** into the left hand chassis and loosely bolt in place using item **F** with item **H**.
5. Using item **F** bolt item **A** between item **B** and item **C**.
6. Using item **G** with item **J** bolt item **D** to item **A**.
7. Fully tighten all nuts and bolt and ensure Towbar is rigid and secure.
8. Cut the bumper centrally 85 wide x 50 deep.
9. Refit the bumper.
10. Using item **E** bolt the ball bracket and wiring plate (not supplied in this kit) to the mounting plate and fully tighten.

NOTE: On some models you may find it necessary to trim the chassis ends to allow side arms to sit correctly. SHOWN IN. FIG.1



Note: nose load limits and vehicle manufacturer's trailer / caravan weight limits must be observed.