



Tow-Trust Towbars

Important: Please read General Notes overleaf before fitting

Issue 1

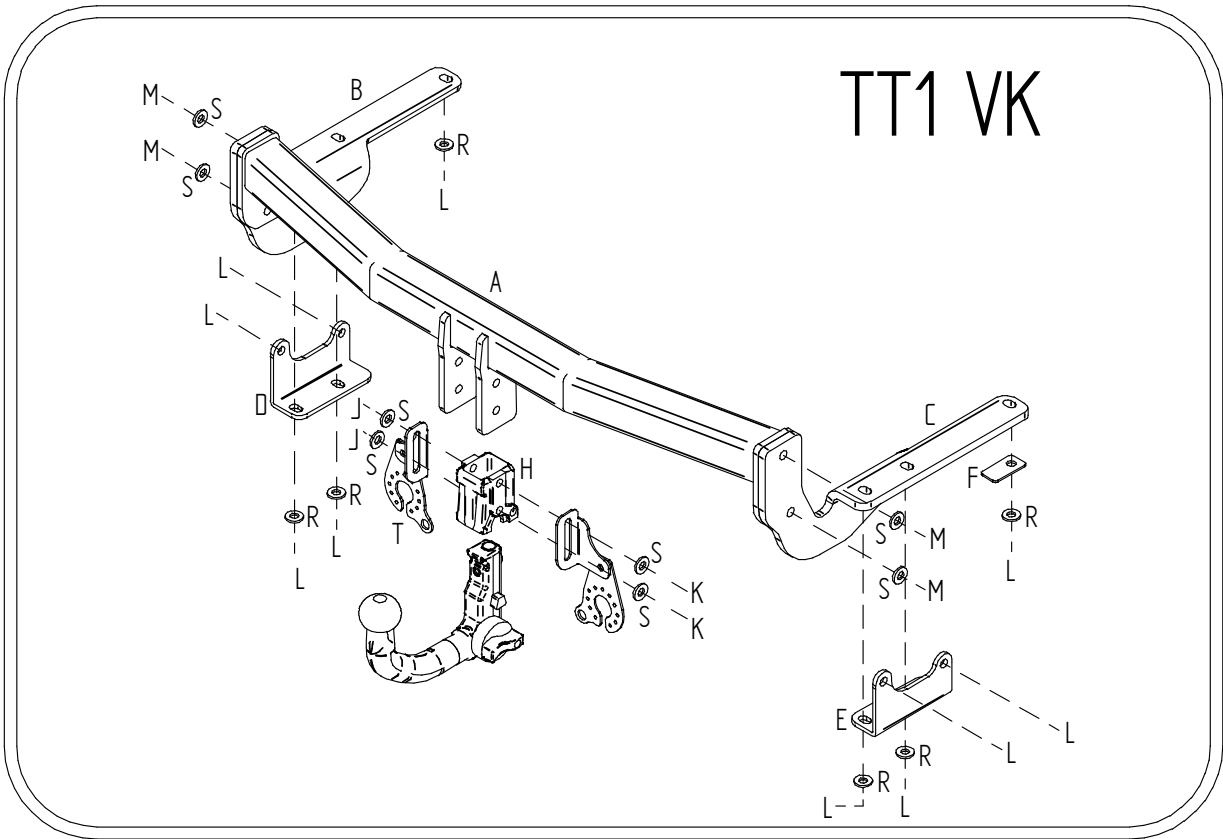
TT1 VK Lexus Rx 300/Rx400 (Underslung Spare Wheel Models Only) 2003>

| Item | Qty | Description | Item | Qty | Description |
|------|-----|--------------------|------|-----|--|
| A | 1 | Crossmember | J | 2 | M12 x 25 Bolts & S/P Washers |
| B | 1 | L/H Side Arm | K | 2 | M12 x 22 Bolts & S/P Washers |
| C | 1 | R/H Side Arm | L | 10 | M10 x 40 x 1.25 Bolts & S/P Washers |
| D | 1 | L/H Bracket | M | 4 | M12 x 45 Bolts, 2 Nuts & 4 S/P Washers |
| E | 1 | R/H Bracket | N | 2 | M 8 x 50 Bolts, Nuts & S/P Washers |
| F | 1 | Clamp Plate | P | 2 | 8 x 25 Flat washers |
| G | 2 | 15 x 22 Spacers | R | 6 | 10 x 25 Flat Washers |
| H | 1 | Detachable Housing | S | 8 | 12 x 25 Flat washers |
| | | | T | 1 | Flip Up Socket Plate |

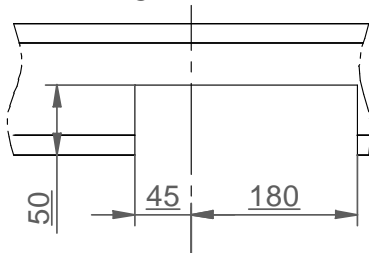
1. Remove rear bumper. Remove rear boot trim to gain access to bumper fixings along rear panel, one tip fixing each side, and fixings along lower edge.
2. Remove nearside and offside under trays. Note: Offside tray is not always fitted. Fixings around bumper edge and fixings into vehicle floor.
3. Temporarily remove electrical unit from offside corner.
4. Remove bumper beam and towing eyes. (This is not refitted with the towbar.)
5. Remove original bolts from rearmost exhaust bracket, refit using Item **N**, Item **P** and Item **G**.
6. Using Item **L** with Item **R** loosely bolt Items **B**, **C**, **D** and **E** to each chassis member into existing threaded holes. Note: at this point do not fit Item **F** with Item **L** into the forward most existing holes on the offside.
7. Using Item **L** loosely bolt Item **D** and Item **E** into the existing holes in the side face of each chassis.
8. Using Item **M** with Item **S** loosely bolt Item **A** to Item **B** and Item **C**.
9. Using Item **K** with Item **S** and Item **J** with Item **S** bolt Item **H** and Item **T** to Item **A**.
10. Fully tighten all fixings and ensure the towbar is rigid and secure.
11. Cut a section centrally from the lower edge of the bumper SEE SKETCH. If required trim to suit. **(Some models don't require a cut so try the bumper first before cutting).**
12. Cut out sections of each undertray. (See sketch)
13. Refit bumper, electrical unit and under trays.
14. Using Item **L** with Item **F** refit offside undertray (If fitted) to the forward existing hole in the chassis.

Note:

1. Recommended Torque Setting for M12 Grade 10.9 -139 Nm. (For other Torque Settings see notes overleaf.)
2. Nose load limits and vehicle manufacturer's trailer / caravan weight limits must be observed.



LOWER BUMPER
CUTOUT
INSIDE VIEW



UNDERTRAY
CUTOUTS
(SOME MODELS ONLY)

