



Tow-Trust Towbars

Important: Please read General Notes overleaf before fitting

Issue 4

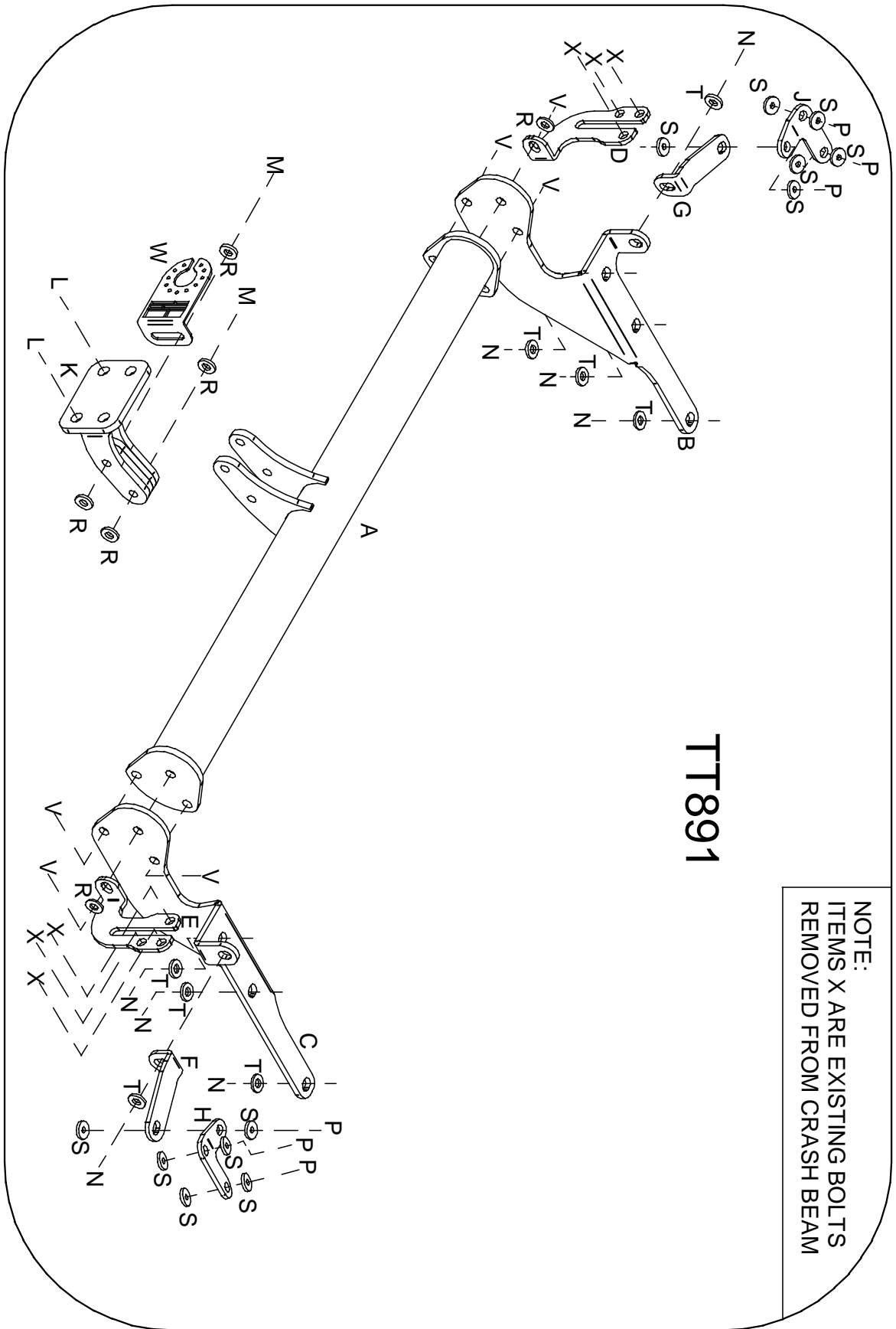
TT891 Toyota Rav 4 2006>

Item	Qty	Description	Item	Qty	Description
A	1	Crossmember	L	2	M16 x 50 Bolts Nuts & S/P Washers
B	1	L/H Side Arm	M	2	M12 x 85 Grade 10.9 Bolts & Nyloc Nuts
C	1	R/H Side Arm	N	8	M12 x 40 x 1.25 Bolts & S/P Washers
D	1	L/H Rear Panel Bracket	P	6	M 8 x 30 x 1.25 Bolts, Nuts & S/P Washers
E	1	R/H Rear Panel Bracket	R	6	12 x 25 Flat Washers
F	1	R/H Side Arm Assembly	S	12	8 x 25 Flat Washers
G	1	L/H Side Arm Assembly	T	8	12 x 35 Flat Washers
H	1	R/H Clamp Plate	V	6	M12 x 45 Bolts, 4 Nuts & S/P Washers
J	1	L/H Clamp Plate	W	1	Socket Plate
K	1	Extension Bar			

1. Remove rear bumper. Two fixings along lower edge, two fixings around each wheel arch, five fixings along rear door, one fixing in each lower corner, one fixing on hinge side of door.
2. Temporarily remove the crash beam and crash beam packers.
3. Temporarily remove the side vents from the outer skin of the vehicle.
4. Remove towing eye.
5. Using Item **N** with Item **T** loosely bolt Item **B** and Item **C** to the existing points on the lower face of each chassis.
6. Using Item **N** with Item **T** loosely bolt Item **G** and Item **F** into the side mounting points.
7. Locate Item **J** and Item **H** through the side vent and using Item **P** with Item **S** loosely bolt into place at the same time securing Item **G** and Item **F**.
8. Using Item **V** loosely bolt Item **A** to Item **B** and Item **C**, at the same time bolt Item **D** and Item **E** into place
9. Using original bolts loosely bolt Item **D** and Item **E**, at the same time refit crash beam packers.
10. Fully tighten all nuts and bolts and ensure the towbar is rigid and secure.
11. Refit crash beam and side vents.
12. Refit rear bumper.
13. Using Item **M** with Item **R** bolt Item **K** to Item **A**.
14. Using Item **L** bolt the ball bracket and wiring plate (not supplied in this kit) to the mounting plate.

Note:

1. Recommended Torque Setting for M12 Grade 10.9 -139 Nm. (For other Torque Settings see notes overleaf.)
2. Nose load limits and vehicle manufacturers' trailer / caravan weight limits must be observed.



TT891

NOTE:
 ITEMS X ARE EXISTING BOLTS
 REMOVED FROM CRASH BEAM