



Tow-Trust Towbars

Important: Please read General Notes overleaf before fitting

Issue 1

TV4 VAUXHALL MERIVA 2010>

Item	Qty	Description	Item	Qty	Description
A	1	Crossmember	D	10	M10 x 40 Bolts & S/P Washers
B	1	Extension Bar	E	2	M10 Plain Nuts
C	2	Handed Side Arms	F	2	M12 x 40 Bolts & S/P Washers
			G	1	M12 x 100 Bolts & Nyloc Nut
			H	6	M10 x 35 Bolts, Nuts & S/P Washer
			J	2	10 x 40 Flat washers
			K	2	10 x 30 Flat Washers
			L	8	10 x 25 Flat Washers
			M	4	12 x 25 Flat Washers
			N	2	M16 x 50 Bolts Nut & S/P Washers

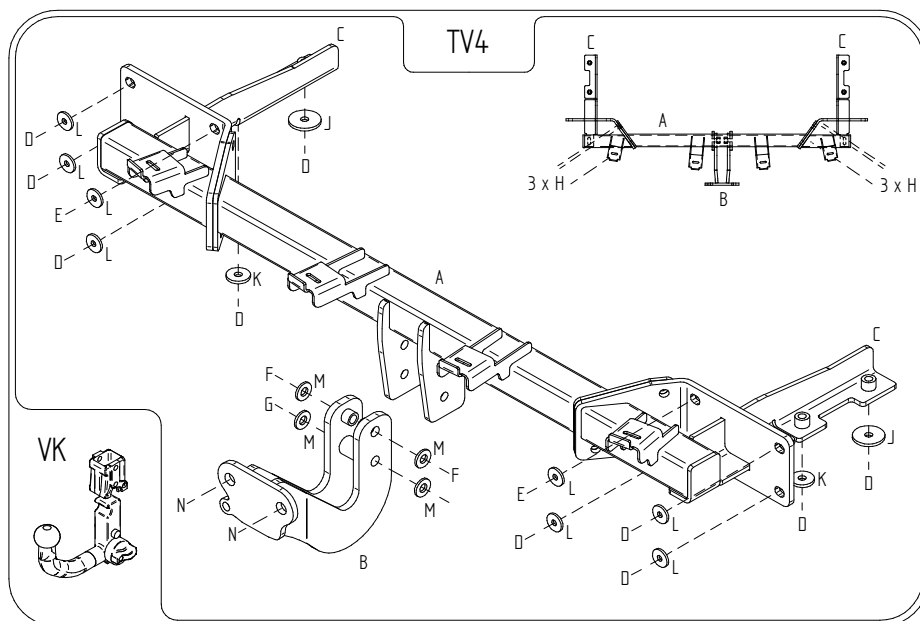
IMPORTANT: IT IS ADVISABLE TO USE A SEALANT ON MATING FACES, AND AROUND ANY MOUNTING POINTS ON REAR PANEL TO PREVENT ANY WATER DAMAGE TO CHASSIS OR BOOT.

BUMPER REMOVAL:

Remove the rear light clusters (two fixings found inside boot behind side opening trims), remove three fixings in each wheel arch, carefully unclip the bumper from around light cluster area and pull bumper rearwards.

TOWBAR INSTALATION:

1. Remove the plastic support from the aluminium rear crash beam. **(Plastic support is refitted to Towbar).**
2. Remove the aluminium rear crash beam. **(This is not refitted with Towbar assembly).**
3. Using Item D with Item J and Item D with Item K loosely bolt Items C into each correct chassis through the vertical Towbar mounting points. (Drill holes out to 14mm if required).
4. Using Item D with Item L and Item E with Item L bolt items C to the rear panel Towbar mounting points.
5. Insert Item A from below up in between the side arms (Item C) and bolt in place using Item H.
6. Using Item F with Item M and Item G with Item M bolt Item B to Item A.
7. Fully tighten all nuts and bolts ensuring Towbar is rigid square and secure.
8. Place plastic support onto its new mounts located across the Towbar and refit the rear bumper.
9. Using Item N bolt your desired choice of ball bracket (not supplied in this kit) to Item B and fully tighten.



Note:

1. Recommended Torque Setting for M12 Grade 10.9 -139 Nm. (For other Torque Settings see notes overleaf.)
2. Nose load limits and vehicle manufacturers trailer / caravan weight limits must be observed.